

# Zero Suicide



**COLORADO**

**Department of Public  
Health & Environment**

# National Hispanic and Latino Prevention Technology Transfer Center

Presented by Maxine Henry MSW, MBA and  
Priscila Giamassi, MPM, CPS



# Outline

**Welcome and PTTCs  
Introductions**

**Hispanic/Latinx  
communities overall  
and in Colorado**

**More about the survey**

**Platica/Conversation  
and Next steps**



# TIME FOR INTRODUCTIONS

- Cultural introductions







National Hispanic and Latino

**PTTC**

Prevention Technology Transfer Center Network  
Funded by Substance Abuse and Mental Health Services Administration

## Section 1

# Introduction to the PTTC

The use of affirming language inspires hope.

**LANGUAGE MATTERS.**

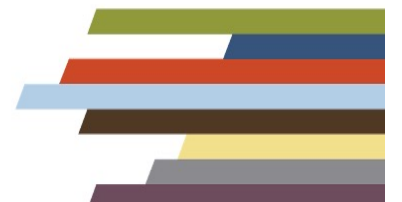
**Words have power.**



**PEOPLE FIRST.**



The PTTC Network uses affirming language to promote the application of evidence-based and culturally informed practices.





Mountain Plains (HHS Region 8)

**PTTC**

Prevention Technology Transfer Center Network  
Funded by Substance Abuse and Mental Health Services Administration

[YOUR PTTC](#) ▾

[EDUCATION](#) ▾

[RESOURCES](#) ▾

[PROJECTS](#) ▾

[COMMUNICATION](#) ▾

[ABOUT](#) ▾

**X MOUNTAIN PLAINS PTTC NAVIGATION** (Select to expand / collapse menu)

[Go to Center](#) 

**Virtual Learnings**

HealtheKnowledge  
Online Courses  
Recorded Webinars

**Evidence-Based Resources**

Resources for Challenging Times  
Equity, Diversity, and Inclusion(EDI)  
Suicide Prevention: Research & Resources  
Alcohol, Cannabis, and Vaping Prevention Resources  
SBIRT: Resources & Tools  
American Indian Substance Misuse/Abuse Prevention  
Resources  
Guide to Online Registries for Substance Misuse Prevention  
Evidence-based Progr...  
Adjusting Prevention Efforts to Virtual Settings

**Region 8 Resources**

About Us  
Advisory Board  
Staff Directory  
Continuing Education  
Needs Assessment Survey Findings  
Core Trainings for Prevention  
Specialist Certification

# National Hispanic and Latino Prevention Technology Transfer Center

Presented by Maxine Henry MSW, MBA and  
Priscila Giamassi, MPM, CPS



## Acknowledgment

Presented in 2022 by the National Hispanic and Latino Prevention Technology Transfer Center (PTTC), National Latino Behavioral Health Association (NLBHA) P.O. Box 1360, Pena Blanca, NM 87041.

[PTTCnetwork.org/hispaniclatino](https://PTTCnetwork.org/hispaniclatino)

This presentation was prepared for the National Hispanic and Latino Prevention Technology Transfer Center (PTTC), under a cooperative agreement from the Substance Abuse and Mental Health Services Administration (SAMHSA). All material appearing in this publication, except that taken directly from copyrighted sources, is in the public domain and may be reproduced or copied without permission from SAMHSA or the authors. Citation of the source is appreciated. Do not reproduce or distribute this publication for a fee without specific, written authorization from National Hispanic and Latino Prevention Technology Transfer Center (PTTC) Network. For more information on obtaining copies of this publication, call 720-607-7897

At the time of this publication, Miriam E. Delphin-Rittmon, Ph.D, served as Assistant Secretary for Mental Health and Substance Use in the U.S. Department of Health and Human Services and the Administrator of the Substance Abuse and Mental Health Services Administration.

The opinions expressed herein are the view of PTTC Network and do not reflect the official position of the Department of Health and Human Services (DHHS), SAMHSA. No official support or endorsement of DHHS, SAMHSA, for the opinions described in this document is intended or should be inferred.

This work is supported by grants 1U79SP023012 from the Department of Health and Human Services, Substance Abuse and Mental Health Services Administration.

Presented 2022.



National Hispanic and Latino

PTTC

Prevention Technology Transfer Center Network  
Funded by Substance Abuse and Mental Health Services Administration

# HOUSEKEEPING

- PPT Slide Deck
- Q&A Session



National Hispanic and Latino

PTTC

Prevention Technology Transfer Center Network  
Funded by Substance Abuse and Mental Health Services Administration

# NLBHA's Mission

The Mission and Goal of The National Latino Behavioral Health Association is to influence national behavioral health policy, eliminate disparities in funding and access to services, and improve the quality of services and treatment outcomes for Latino populations.



National Hispanic and Latino

PTTC

Prevention Technology Transfer Center Network  
Funded by Substance Abuse and Mental Health Services Administration



**Fredrick Sandoval, MPA**  
**Executive Director**  
**NLBHA**

# NLBHA's Objectives

NLBHA's Objective is to provide national leadership on mental health and substance abuse concerns of the Latino community. NLBHA's Policy Priorities are:

1. Targeted Capacity Expansion of Mental Health Services for Latinos
2. Latino Behavioral Health Evidenced Based Practices
3. Legislation to increase the number of Counselors/Therapists/Other Behavioral Health Practitioners
4. Funding for Co-Occurring Disorders of Alcohol and Substance Abuse
5. Opioid Crisis in the Latino Community
6. Suicide Prevention





National Hispanic and Latino

PTTC

Prevention Technology Transfer Center Network  
Funded by Substance Abuse and Mental Health Services Administration

# National Hispanic and Latino PTTC Mission

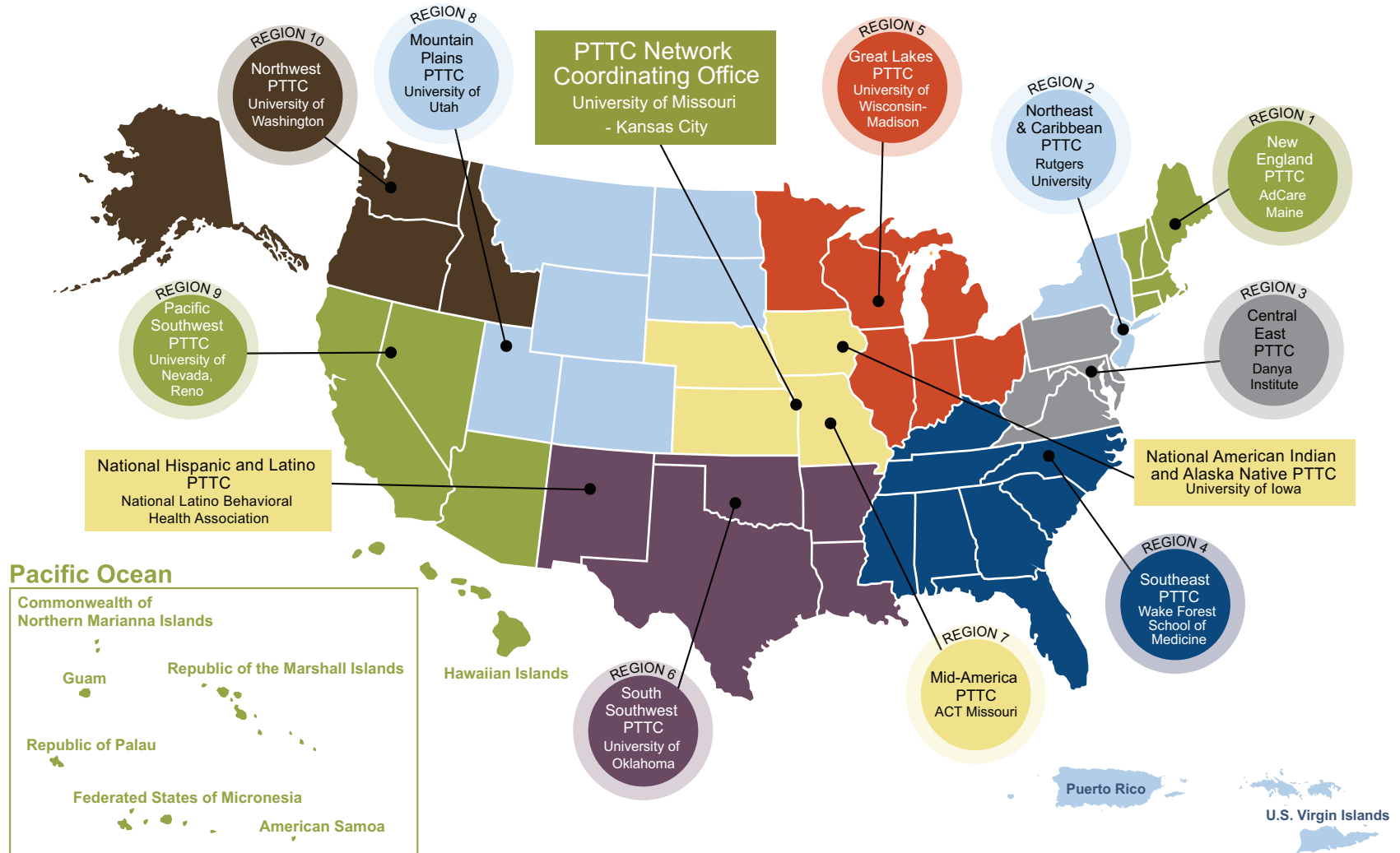
The mission of the National Hispanic and Latino Prevention Technology Transfer Center is to provide high-quality training and technical assistance to improve the capacity of the workforce serving Hispanic and Latino communities in behavioral health, treatment, and recovery. We disseminate and support the implementation of evidence-based and promising practices to enhance service delivery, promote the growth of a diverse, culturally competent workforce, and bridge access to quality behavioral health services. We are committed to increasing health equity and access to effective culturally and linguistically grounded approaches.



PTTC

Prevention Technology Transfer Center Network  
Funded by Substance Abuse and Mental Health Services Administration

PTTC Network





National Hispanic and Latino

**PTTC**

Prevention Technology Transfer Center Network  
Funded by Substance Abuse and Mental Health Services Administration

## National Hispanic and Latino Prevention Technology Transfer Center (PTTC) Team



Maxine Henry, MSW, MBA  
Project Director



Priscila Giamassi, MPM, CPS  
Project Coordinator



Program Specialist



National Hispanic and Latino

PTTC

Prevention Technology Transfer Center Network  
Funded by Substance Abuse and Mental Health Services Administration

## OVERARCHING GOALS

1

Increase and Strengthen the prevention workforce working with Hispanic and Latino communities

2

Promote evidence based and promising practices that are effective in Hispanic and Latino communities

3

Assist in breaking barriers to access for Hispanics and Latinos in need of prevention services

# PTTC

## Menu of Services

### Services

#### Training and Technical Assistance for Hispanic/Latinx Communities and Providers Who Serve Hispanic/Latinx Communities in English, Spanish or Portuguese

- Identify, select, and tailor evidence-based and promising practices for Hispanic and Latino populations
- Virtual Learning Communities
- Trainings on cultural humility and linguistic considerations for Hispanic and Latino populations. \*
- Live webinar series In English, Spanish and/or Portuguese.
- Provide support and training for professional prevention certifications \*
- Hispanic and Latino Executive Leadership Fellowship Program
- Translation of educational prevention materials (Spanish and Portuguese)

#### Training and Technical Assistance for Regional PTTCs

- Guidance on how to work with and conduct outreach with Hispanic and Latinx communities. \*
- Guidance on networking with Hispanic and Latinx communities. \*
- Assist with promotion of Regional Centers
- Guidance on how to plan and considerations for implementing face-to-face trainings with Hispanic and Latinx communities. \*
- Cultural Competency and Cultural Humility Training. \*
- Live webinar series In English, Spanish and/or Portuguese.

#### Review and translation of educational prevention materials to meet cultural and linguistic needs. (Spanish and Portuguese)

- Translation of Vaping Brochure (Spanish)
- Development of culturally informed curricula
- Translation of curriculum and educational materials (Spanish and Portuguese)
- Virtual discussions
- Development of multilingual Fact Sheets
- Development of Tool Kits

\* Denotes Virtual or In-Person options





National Hispanic and Latino

PTTC

Prevention Technology Transfer Center Network  
Funded by Substance Abuse and Mental Health Services Administration

## CERTIFICACIÓN DE RHODE ISLAND PARA ESPECIALISTA EN PREVENCIÓN

### GUÍA DE ESTUDIO PARA EL EXAMEN DE CERTIFICACIÓN

Preparado por:  
Centro de Recursos de Prevención de Rhode Island

Preparado para: BHDDH

*Actualizado en invierno de 2015*



Esta traducción está respaldada por la subvención 1U79SP023012 del Departamento de Salud y Servicios Humanos (DHHS por sus siglas en inglés), la Administración de Servicios de Abuso de Sustancias y Salud Mental (SAMHSA por sus siglas en inglés). Las opiniones expresadas aquí son la opinión del Centro Hispano Latino de Capacitación y Asistencia Técnica en Prevención o/y NLBHA, y no reflejan la posición oficial del Departamento de Salud y Servicios Humanos (DHHS), la Administración de Servicios de Abuso de Sustancias y Salud Mental (SAMHSA). No se pretende ni se debe inferir ningún apoyo o respaldo oficial de DHHS, SAMHSA, a las opiniones descritas en este documento.

**SAMHSA**  
Substance Abuse and Mental Health  
Services Administration

# Prevention Ambassadors Scholarship Program



## GUÍA DEL CANDIDATO PARA EL EXAMEN IC&RC de Especialista en Prevención

Basado en el Análisis del Trabajo del Especialista en Prevención de 2013

© 2017 International Certification and Reciprocity Consortium. Todos los derechos reservados. Ninguna parte de este documento puede ser reproducido en alguna manera sin el consentimiento por escrito de IC&RC

Esta traducción está respaldada por la subvención 1U79SP023012 del Departamento de Salud y Servicios Humanos (DHHS por sus siglas en inglés), la Administración de Servicios de Abuso de Sustancias y Salud Mental (SAMHSA por sus siglas en inglés). Las opiniones expresadas aquí son la opinión del Centro Hispano Latino de Capacitación y Asistencia Técnica en Prevención o/y NLBHA, y no reflejan la posición oficial del Departamento de Salud y Servicios Humanos (DHHS), la Administración de Servicios de Abuso de Sustancias y Salud Mental (SAMHSA). No se pretende ni se debe inferir ningún apoyo o respaldo oficial de DHHS, SAMHSA, a las opiniones descritas en este documento.

T: + 1 717 -540-4457 F: + 1 717 773-4483. [internationalcredentialing.org](http://internationalcredentialing.org)

**NLBHA**  
National Latino  
Behavioral Health Association



National Hispanic and Latino

**PTTC**

Prevention Technology Transfer Center Network  
Funded by Substance Abuse and Mental Health Services Administration

# Hispanic and Latino Executive Leadership Fellowship Program Class of 2022:

- |  |   |
|--|---|
| 1. <b>Alejandra María Vargas, MSW, ASW</b>                 | 12. <b>Liz Espinoza, LCSW-R</b>                     |
| 2. <b>Cesar E. Bravo Wolfe, MSSW, LICSW</b>                | 13. <b>Lucila A. Beatón LMSW, LISW-CP</b>           |
| 3. <b>Claudia M. Lara, MA, LAMFT, IMH-E ®</b>              | 14. <b>Liz Paola Domingues, MSc</b>                 |
| 4. <b>David Sotelo</b>                                     | 15. <b>Nancy Jiménez, LMHC</b>                      |
| 5. <b>Dyann Ávila, LCSW-S</b>                              | 16. <b>Norma A. Martinez, MSW, LICSW</b>            |
| 6. <b>Emely Santiago Sosa, LMSW, MPH</b>                   | 17. <b>Norma Patricia Fernandez, PhD, MPH, MINT</b> |
| 7. <b>Ernesto Figueroa BA, JD, LLM</b>                     | 18. <b>Onesimo Baltazar Corona, MPA</b>             |
| 8. <b>Evelyn Casimiro, MSW, ACSW</b>                       | 19. <b>Priscila Giamassi, MPM, CPS</b>              |
| 9. <b>Gabriel Ramirez, MPA, MBA, Adv CASAC</b>             | 20. <b>Roberto Suarez, LMFT</b>                     |
| 10. <b>Glory McDaniel, MA, LPC, LAC, NCC, EMDR Trained</b> | 21. <b>Thomas A. Chávez, Ph.D.</b>                  |
| 11. <b>Lisa Noelani Chavez, LISW</b>                       | 22. <b>Ziomara Ochoa-Rodriguez, M.S., LMFT</b>      |



National Hispanic and Latino

PTTC

Prevention Technology Transfer Center Network

Funded by Substance Abuse and Mental Health Services Administration

# Guide and e-Compendium of Evidence-Based Programs

Evidence-Based Programs

Evidence-Based Programs

Search

Search Keywords

A B C D E F G H I J K L M N O P Q R S T U V W X Y Z 0-9

Familias Unidas

Print

Focus Population and Brief Description of Program:

Family-based intervention to improve family functioning and decrease adolescent substance use for Families with Children and Adolescents Ages 12-17

Target Problems or Risk Factors:

Alcohol and other Drug Problems, Behavior Problems, Sexual Risk Behavior

Level of Intervention:

Selective intervention, Indicated intervention

Settings in Which Program Can Be Delivered:

Home, School (K-12), Community

Latinos in Participant Samples:

Y-exclusive

Type of Program:

Latino/a-Specific Program

Strength of Evidentiary Support:

★-Crime Solutions  
★★-CA Evidence-based CH

Registry & Program Description:

Crime Solutions - <https://crimesolutions.ojp.gov/programdetails?id=79>  
CA Evidence-based CH - <https://www.cebc4cw.org/program/familias-unidas/>

Contact Information:

Website: [www.familias-unidas.info](http://www.familias-unidas.info)  
Contact:  
Yannine Estrada, PhD  
University of Miami  
E-mail: [yestrada@med.miami.edu](mailto:yestrada@med.miami.edu)  
Phone: (305) 243-6614

Evidence-Based Programs

Evidence-Based Programs

Search

Search Keywords

A B C D E F G H I J K L M N O P Q R S T U V W X Y Z 0-9

Programs that Are Implemented in School or School-District-Wide Settings

Programs that Can Be Implemented in a Variety of Settings

Select sorting order

Wyman's Teen Outreach Program

Second Step: Student Success Through Prevention for Middle School

Responding in Peaceful and Positive Ways

Lions Quest, Skills for Adolescents

The Leadership Program's Violence Prevention Project

Get Real: Comprehensive Sex Education that Works

Student Success Skills

Steps to Respect

Social Skills Improvement System (SSIS)

Social Decision Making/Problem Solving Program

**SAMHSA**  
Substance Abuse and Mental Health  
Services Administration

**NLBHA**  
National Latino  
Behavioral Health Association



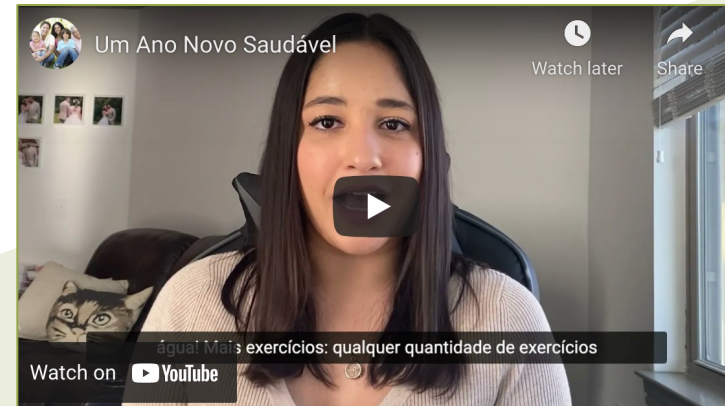


National Hispanic and Latino

PTTC

Prevention Technology Transfer Center Network  
Funded by Substance Abuse and Mental Health Services Administration

## Short videos





National Hispanic and Latino

PTTC

Prevention Technology Transfer Center Network  
Funded by Substance Abuse and Mental Health Services Administration

# Toolkits, Webinars and Fact sheets



**SAMHSA**  
Substance Abuse and Mental Health  
Services Administration

NLBHA  
National Latino  
Behavioral Health Association



National Hispanic and Latino

PTTC

Prevention Technology Transfer Center Network  
Funded by Substance Abuse and Mental Health Services Administration

## Upcoming Resources on Suicide Prevention

- Central East PTTC Collaboration Kitchen-table Pláticas: A conversational workshop to discuss suicide and overdose prevention among BIPOC youth and families.
- Partnership with the American Foundation for Suicide Prevention (AFSP) cultural review, adaptation and Spanish Translation of their Talk Save Lives curricula and ToT (NLBHA)
- Counseling on Access to Lethal Means (CALM) training review, adaptation and translation
- Fact Sheet on Suicide Prevention 2022
- List of resources available from 2019 - 2021 (attachment)



National Hispanic and Latino

**PTTC**

Prevention Technology Transfer Center Network  
Funded by Substance Abuse and Mental Health Services Administration

## Section 2

**Hispanic/Latinx  
communities overall**

**Hispanic/Latinx  
communities in Colorado**



National Hispanic and Latino

PTTC

Prevention Technology Transfer Center Network

Funded by Substance Abuse and Mental Health Services Administration

# Getting to know the Latinx community

## Hispanics & Latinos in the US

### 60.6 million

**SAMHSA**  
Substance Abuse and Mental Health  
Services Administration

NLBHA  
National Latino  
Behavioral Health Association



National Hispanic and Latino

**PTTC**

Prevention Technology Transfer Center Network  
Funded by Substance Abuse and Mental Health Services Administration



**Cuban**



**Mexican**



**Puerto Rican**



**South or Central American**



**Other Spanish culture or origin**



National Hispanic and Latino

PTTC

Prevention Technology Transfer Center Network  
Funded by Substance Abuse and Mental Health Services Administration

# Latinx community in Colorado

- **21.8%** of the people in Colorado are Hispanic or Latino (1,269,520 people)
- Spanish is the most common foreign language spoken in Colorado
- Colorado is becoming more racially diverse: 80% identified as white in the 2010 Census; that figure fell to 71% in 2020.
- The state's Hispanic population grew by 224,703 people, from 20.7% of the state's population to 21.9%



National Hispanic and Latino

PTTC

Prevention Technology Transfer Center Network

Funded by Substance Abuse and Mental Health Services Administration

# Hispanic Ancestry in Colorado

## Hispanic Ancestry

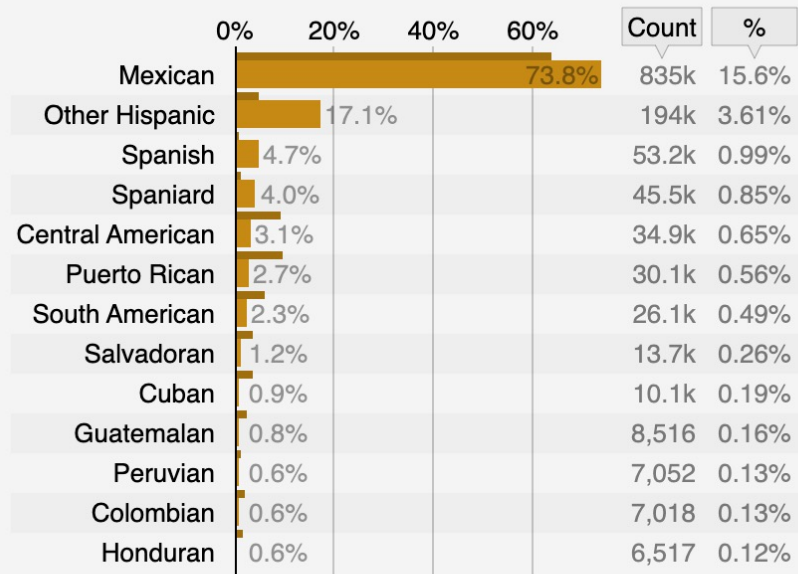
#2

Self-reported Hispanic ancestry as a percentage of the Hispanic population.

Scope: population of the United States and Colorado

Colorado

United States



Count number of people reporting given ancestry

% as a percentage of the total population





National Hispanic and Latino

PTTC

Prevention Technology Transfer Center Network

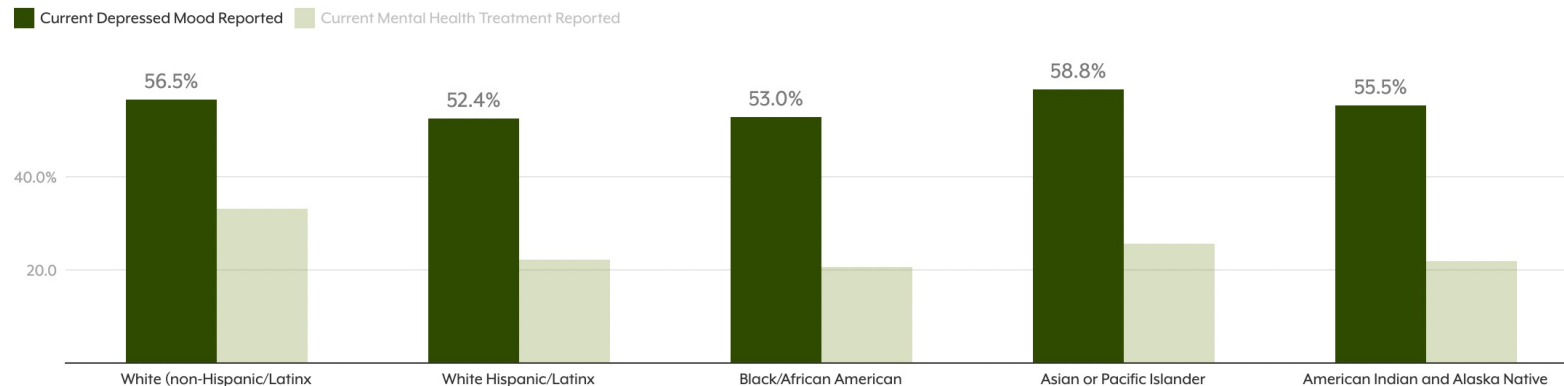
Funded by Substance Abuse and Mental Health Services Administration

# Suicide rates in Colorado

From 2004 to 2020: 17,044 deaths by suicide: 2,136 were Hispanics

People of color in Colorado who died by suicide were less likely to have mental health treatment than white Coloradans, even though similar percentages of all groups were reported as having a current depressed mood.

**Figure 2. Non-White Coloradans Who Died By Suicide Were As Likely to Be Depressed, Less Likely to Be Receiving Treatment, 2010-2018**



Source: Colorado Department of Public Health and Environment



National Hispanic and Latino

**PTTC**

Prevention Technology Transfer Center Network  
Funded by Substance Abuse and Mental Health Services Administration

## Section 3

**More about this  
T/TA**



National Hispanic and Latino

**PTTC**

Prevention Technology Transfer Center Network  
Funded by Substance Abuse and Mental Health Services Administration





National Hispanic and Latino

PTTC

Prevention Technology Transfer Center Network  
Funded by Substance Abuse and Mental Health Services Administration

# About the Survey

Date:

03-22-2022



Name of Respondent:

Job Title:

Organization or Agency Name:

Location of Organization:

Next



National Hispanic and Latino

PTTC

Prevention Technology Transfer Center Network  
Funded by Substance Abuse and Mental Health Services Administration

1) Describe the Hispanic/Latino populations you serve:

2) What Training or Technical Assistance (T/TA) do you feel is needed to better serve these populations?

3) Who would receive the T/TA? (ex: in the community or your organization)

Back

Next



National Hispanic and Latino

PTTC

Prevention Technology Transfer Center Network  
Funded by Substance Abuse and Mental Health Services Administration

4) From the list below, please mark the level of expertise of your organization in addressing Hispanic/Latino populations the following areas:

	Very Inexperienced	Little experienced	Some experienced	Very Experienced
Knowledge of Hispanic/Latino populations in your community	<input type="radio"/>	<input type="radio"/>	<input type="radio"/>	<input type="radio"/>
Knowledge of diverse community needs	<input type="radio"/>	<input type="radio"/>	<input type="radio"/>	<input type="radio"/>
Understanding of prevention strategies for Hispanic/Latino populations	<input type="radio"/>	<input type="radio"/>	<input type="radio"/>	<input type="radio"/>
Understanding of Evidence Based Practices (EBPs)	<input type="radio"/>	<input type="radio"/>	<input type="radio"/>	<input type="radio"/>
Understanding of Promising Practices	<input type="radio"/>	<input type="radio"/>	<input type="radio"/>	<input type="radio"/>
Understanding of Community-Defined Practices	<input type="radio"/>	<input type="radio"/>	<input type="radio"/>	<input type="radio"/>
Knowledge of cultural factors and behavioral health	<input type="radio"/>	<input type="radio"/>	<input type="radio"/>	<input type="radio"/>
Opioids (local data? abuse? prevention strategies?)	<input type="radio"/>	<input type="radio"/>	<input type="radio"/>	<input type="radio"/>
Suicide (issues and prevention strategies) in Hispanic/Latino populations	<input type="radio"/>	<input type="radio"/>	<input type="radio"/>	<input type="radio"/>
Women's issues (local data? acculturation issues? suicide? unplanned pregnancy? trafficking?)	<input type="radio"/>	<input type="radio"/>	<input type="radio"/>	<input type="radio"/>
LGBTQ+ and Substance Use	<input type="radio"/>	<input type="radio"/>	<input type="radio"/>	<input type="radio"/>
Understanding of Culturally and Linguistically Appropriate Services (CLAS) Standards	<input type="radio"/>	<input type="radio"/>	<input type="radio"/>	<input type="radio"/>
Knowledge of cross-cultural communication	<input type="radio"/>	<input type="radio"/>	<input type="radio"/>	<input type="radio"/>

Back

Next



National Hispanic and Latino

PTTC

Prevention Technology Transfer Center Network  
Funded by Substance Abuse and Mental Health Services Administration

5) From the list below, please rate your level of interest in receiving/participating in training on the following topic areas to help serve Hispanic/Latino populations:

	Not at all Interested	A little Interested	Somewhat Interested	Very Interested
Culturally and Linguistically Appropriate Services (CLAS) Standards 101	<input type="radio"/>	<input type="radio"/>	<input type="radio"/>	<input type="radio"/>
Implementation of Culturally and Linguistically Appropriate Services (CLAS) Standards	<input type="radio"/>	<input type="radio"/>	<input type="radio"/>	<input type="radio"/>
Culturally grounded prevention strategies	<input type="radio"/>	<input type="radio"/>	<input type="radio"/>	<input type="radio"/>
Selection and tailoring of Evidence Based Practices (EBPs)	<input type="radio"/>	<input type="radio"/>	<input type="radio"/>	<input type="radio"/>
Promising Practices through the lenses of prevention	<input type="radio"/>	<input type="radio"/>	<input type="radio"/>	<input type="radio"/>
Community-Defined Practices	<input type="radio"/>	<input type="radio"/>	<input type="radio"/>	<input type="radio"/>
Cultural factors and considerations in behavioral health	<input type="radio"/>	<input type="radio"/>	<input type="radio"/>	<input type="radio"/>
Local Data and Prevention Strategies on Opioids	<input type="radio"/>	<input type="radio"/>	<input type="radio"/>	<input type="radio"/>
Local Data and Prevention Strategies on Suicide	<input type="radio"/>	<input type="radio"/>	<input type="radio"/>	<input type="radio"/>
Local Data and Prevention Strategies on Women's issues (acculturation issues, suicide, unplanned pregnancy, trafficking)	<input type="radio"/>	<input type="radio"/>	<input type="radio"/>	<input type="radio"/>
Local Data and Prevention Strategies on LGBTQ+ and Substance Use	<input type="radio"/>	<input type="radio"/>	<input type="radio"/>	<input type="radio"/>
Cross-cultural communication	<input type="radio"/>	<input type="radio"/>	<input type="radio"/>	<input type="radio"/>

Back

Next



National Hispanic and Latino

PTTC

Prevention Technology Transfer Center Network  
Funded by Substance Abuse and Mental Health Services Administration

6) Describe your organization's bilingual and bicultural staffing patterns in relationship to the populations that you serve.

Type here...

7) What are the main challenges facing your organization in engaging with Hispanic/Latino communities?

Type here...

8) What successful strategies do you currently use to engage Hispanic/Latino communities?

Type here...

9) How do you currently assess the impact of Hispanic/Latino community engagement processes and activities that you undertake?

Type here...

Back

Submit





National Hispanic and Latino

**PTTC**

Prevention Technology Transfer Center Network  
Funded by Substance Abuse and Mental Health Services Administration

## Section 4

### Platica/Conversation

### Next steps





National Hispanic and Latino

PTTC

Prevention Technology Transfer Center Network  
Funded by Substance Abuse and Mental Health Services Administration

# Next Steps

- Survey
  - Share results after closing
  - Update on planning training events



National Hispanic & Latino

**ATTC**

Addiction Technology Transfer Center Network  
Funded by Substance Abuse and Mental Health Services Administration



National Hispanic and Latino

**PTTC**

Prevention Technology Transfer Center Network  
Funded by Substance Abuse and Mental Health Services Administration

## 2022 National Latino Behavioral Health Conference

# SAVE THE DATE!

### Latino Behavioral Health Equity

*¡Juntos Podemos!*

**September 15-16, 2022**

**Las Vegas, NV**

For more information, please send an email to: [nlhconference@nlbha.org](mailto:nlhconference@nlbha.org)

**SAMHSA**  
Substance Abuse and Mental Health  
Services Administration

National Latino  
Behavioral Health Association **NLBHA**

*For more information about the National Hispanic and Latino PTTC and to request training and technical assistance you can reach us at:*

[www.nlbha.org](http://www.nlbha.org)

[PTTCnetwork.org/hispaniclatino](http://PTTCnetwork.org/hispaniclatino)



*Or directly at:*

**Maxine Henry, MSW, MBA**

[maxine@nlbha.org](mailto:maxine@nlbha.org)

720-607-6118



**Priscila Giamassi, MPM, CPS**

[priscila@nlbha.org](mailto:priscila@nlbha.org)

678-822-1308

**SAMHSA**  
Substance Abuse and Mental Health  
Services Administration

## CONNECT WITH US



[National Hispanic & Latino PTTC](#)



[Juntos Network](#)



[Celebrating Wellness: A Newsletter Celebrating Latino Behavioral Health](#)



National Hispanic and Latino

PTTC

Prevention Technology Transfer Center Network  
Funded by Substance Abuse and Mental Health Services Administration

**Thank you.  
¡Gracias!  
Obrigado.**

***SAMHSA***  
Substance Abuse and Mental Health  
Services Administration

NLBHA  
National Latino  
Behavioral Health Association