



Making Connections

Regional Health Connector Program

Updated: March 2022

Overview

- RHC Vision, Mission, Purpose
- Program Structure and Current Efforts
- How to Connect and Support
- Hear from RHCs and Discussion



This Photo by Unknown Author is licensed under CC BY-NC-ND

Opening Question

Type in the chat your name, pronouns, organization and answer to the following.

What do you already know about the RHC program?

If you're unfamiliar, what are you hoping to learn today?



RHC Vision, Mission, & Purpose



COLORADO
REGIONAL HEALTH CONNECTORS

Partnerships



Program Office
Technical Support/Coaching
Evaluation
Sustainability

Fiscal Agent
Evaluation
Sustainability
Advocacy

Sustainability
Advocacy



This Photo by Unknown Author is licensed under CC BY

Our Vision

Connected systems will lead to healthier lives for all Coloradans.

Our Mission

Regional Health Connectors improve health in Colorado by connecting the systems that keep us healthy – including primary care, public health, social services, and other community resources.

Purpose of the RHC Program



Goals

Better **coordination** across systems

Stronger and more **effective networks** to address SDoH

Stronger **social capital**

Healthier population, lower costs, happier patients and providers

Strategies

Involving clinics in community health initiatives

★ **Connecting** clinics to community assets

Guiding the development of referral networks

Educating on best practices to impact SDoH

Building & Deepening partnerships and capacity

Program Structure & Current Efforts

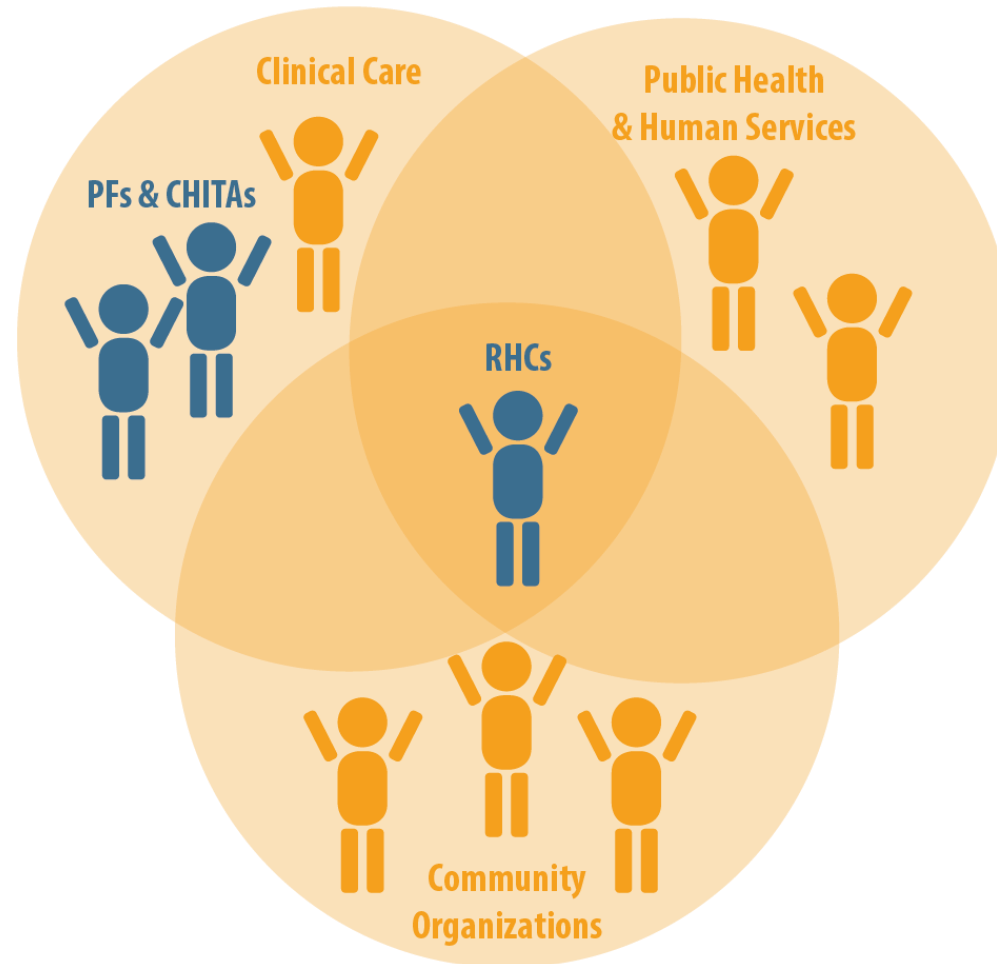


COLORADO
REGIONAL HEALTH CONNECTORS

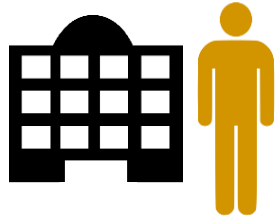
RHCs Work Across Systems

PF – Practice Facilitator

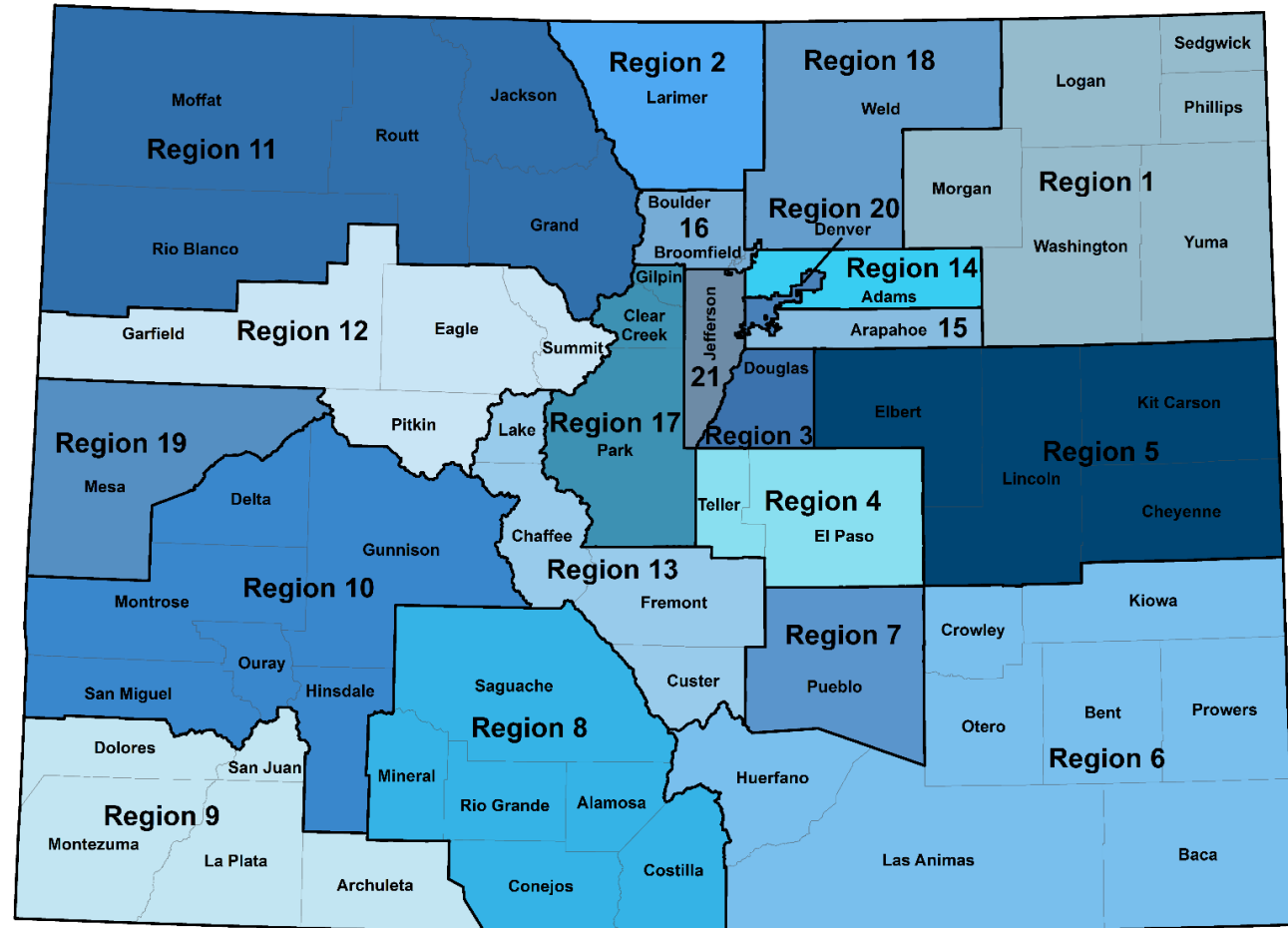
CHITA – Clinical Health
Information Technology
Advisor



RHCs work in 21 Regions across Colorado



- RHCs are embedded in the community & employed by a local organization.
- Examples of local host organizations include LPHAs, AHECs, health alliances, & health-based CBOs/non-profits.



Current Efforts

Innovation Support Practice (ISP)

With this funding, RHCs are:

- **Fostering partnerships, collaboration, and connection** between medical clinics/practices, public health organizations, and community services and resources
- **Addressing social needs** and priorities in the communities where they live, work, and play

Behavioral Health Recovery Act (BHRA)

With this funding, RHCs:

- ☑ **Completed an assessment** of their region's strengths and gaps of evidence-based behavioral health treatment, services, and resources
- ☑ **Created an action plan** to leverage strengths and address identified needs based on the assessment
- ☐ **Will implement and track** the action plan, including evaluation and communication of successes and RHC impact

Other Recent Efforts

Shorter-term projects based on emergent needs and opportunities:

- **mAb Project** – support outreach and communication efforts for the implementation and effectiveness of Monoclonal Antibodies (mAb) treatment
- **Jail Based Behavioral Health Services** - supported county jails to address the needs of individuals with substance use disorders and co-occurring mental health disorders
- **OBH Homeless Support during COVID-19** - supported the work in their communities to address the needs of people experiencing homelessness during the COVID19 pandemic





“This what I love about the RHC program. There’s no, ‘This is what you must do and how you must do it.’ We’re able to respond to needs.”

— Regional Health Connector, Susan Garrett, Region 4 (El Paso and Teller counties)

How to Connect & Support

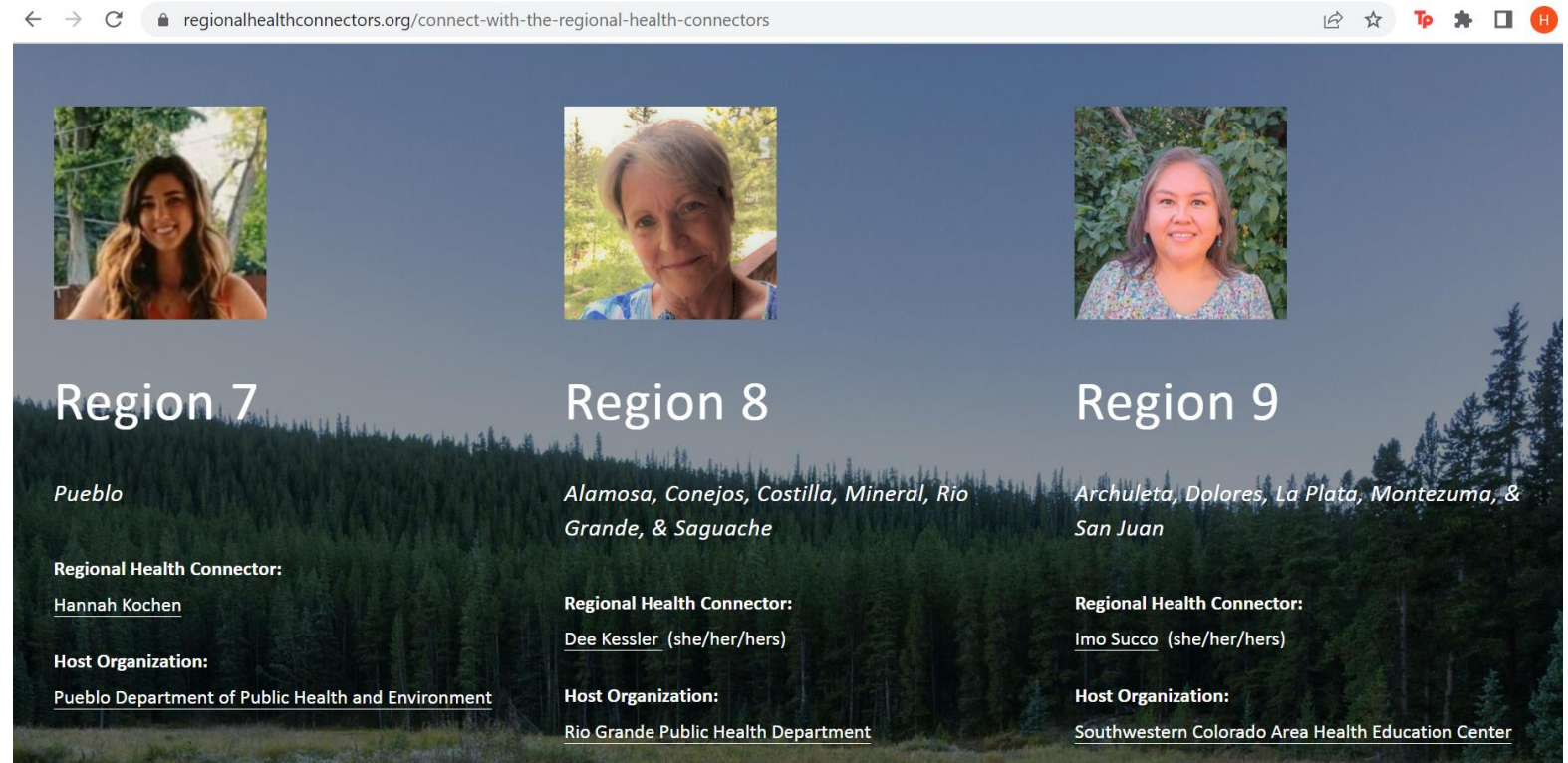


COLORADO
REGIONAL HEALTH CONNECTORS




Ways to Connect

“There is no wrong email, no wrong question to send to an RHC.”

-Kim McDevitt, Region 20
(Denver)



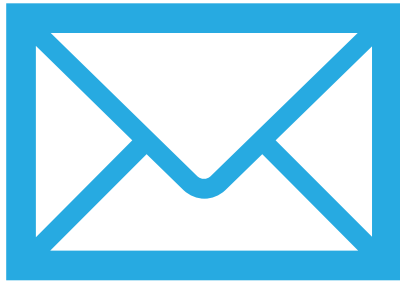
The screenshot shows a web browser window with the URL regionalhealthconnectors.org/connect-with-the-regional-health-connectors. The page displays three columns for different regions, each with a photo of the Regional Health Connector, the region name, a list of counties, the connector's name, and the host organization.

Region 7	Region 8	Region 9
		
Region 7	Region 8	Region 9
<i>Pueblo</i>	<i>Alamosa, Conejos, Costilla, Mineral, Rio Grande, & Saguache</i>	<i>Archuleta, Dolores, La Plata, Montezuma, & San Juan</i>
Regional Health Connector: Hannah Kochen	Regional Health Connector: Dee Kessler (she/her/hers)	Regional Health Connector: Imo Succo (she/her/hers)
Host Organization: Pueblo Department of Public Health and Environment	Host Organization: Rio Grande Public Health Department	Host Organization: Southwestern Colorado Area Health Education Center

Connect with specific RHCs: www.regionalhealthconnectors.org

Ways to Partner

To connect with all RHCs or a broader group:



**RHC Weekly
Resource Email**



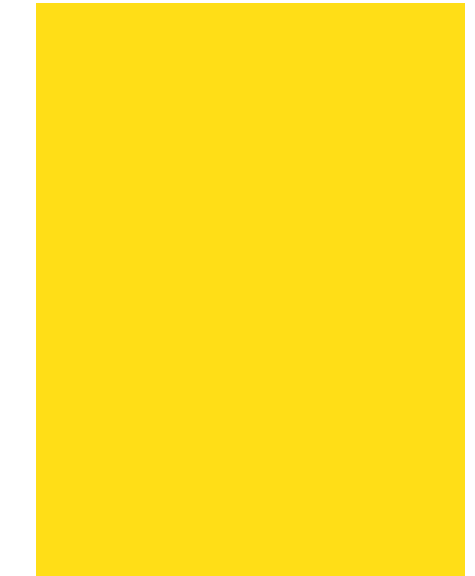
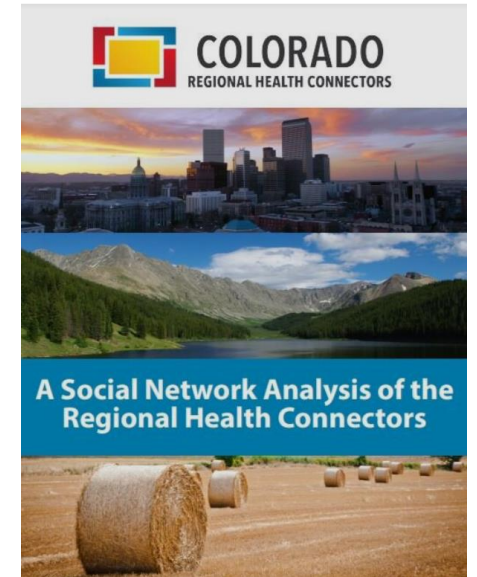
**RHC Monthly
Learning Calls**



**Get in Touch with
Program Staff**

Ways to Support

1. Explore the RHC website and stay in touch.
2. Partner with us. Contact RHC program staff to discuss community engagement needs & contracts/funding
3. Spread the word!
 1. Advocate for the value of RHCs with your organization and partnerships
 2. Connect others with RHCs





Hear from the Regional Health Connectors

“The work of an RHC is
never-ending.”

-Dee Kessler, Region 8 (Alamosa,
Conejos, Costilla, Mineral, Rio Grande,
& Saguache)

Closing Questions

In a personal note to yourself or in the chat

What's your next step to further connect with the RHCs or RHC Program?

In the chat or unmute to answer

What have we not covered that's important to you?



Thank you!
Questions?

Contacts: ggrant@trailhead.institute or hgroves@trailhead.institute